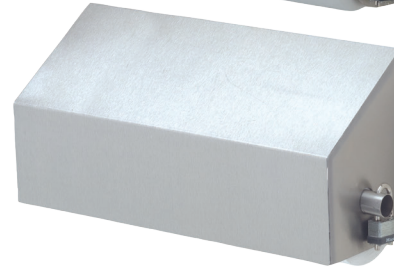
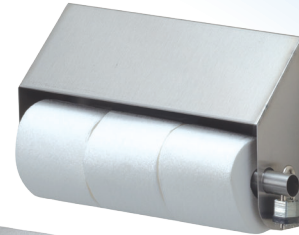


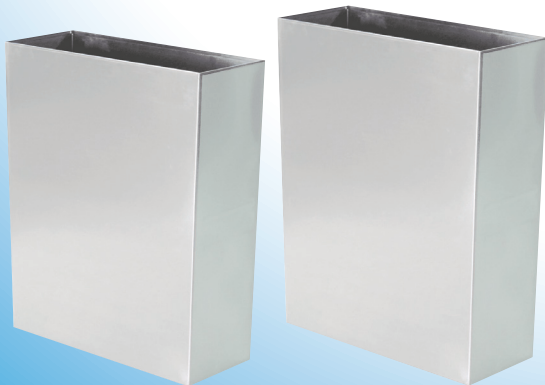


**Since 1925**

**DRAFT 2-20-25**



Each version available to accommodate 1-4 rolls



**Durable Stainless Steel Products**

**Manufactured, Assembled,  
Prepared and Shipped  
directly from Grand Rapids, MI.**

Revised April 1, 2025



MANUFACTURED



IN THE USA  
Since 1925

Contact Us  
Call Toll Free 800-253-9638  
[www.RoyceRolls.net](http://www.RoyceRolls.net)



# The Indestructible Dispenser\*

All series  
available in  
1,2,3, or 4  
roll sizes



**TP Series**



You can't do without our tough-built stainless steel TP-Dispensers. They're hard to scratch or dent, and pilfer-proof when teamed with a sturdy durable lock. If value, not vandalism, is a concern, try the handy TP-Clip.

Our TP-Dispenser frames are made of heavy duty, rust-proof, type 304 stainless steel, with no moving parts, so you are assured of many years of service with little or no maintenance. They're easy to install, clean and refill, and you have a choice of our 1,2,3, or 4 roll model!

Choose Master Locks® (keyed alike)  
or TP-Clip (each sold separately)

#TP464-LOCK



#TP-CLIP



**TP Series**



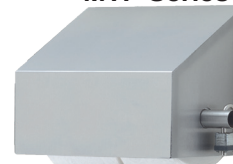
**STP Series**



**CTP Series**



**MTP Series**



ROLLS	SIZE	Standard Dispenser	PRICE	Slanted Dispenser	PRICE	Covered Dispenser	PRICE	Slanted and Covered Dispenser	PRICE
1 Roll	5 1/8"	TP-1	<b>\$59.95</b>	STP-1	<b>\$ 99.95</b>	CTP-1	<b>\$112.95</b>	MTP-1	<b>\$149.95</b>
2 Roll	10 1/4"	TP-2	<b>\$73.95</b>	STP-2	<b>\$112.95</b>	CTP-2	<b>\$127.95</b>	MTP-2	<b>\$169.95</b>
3 Roll	15 1/2"	TP-3	<b>\$85.95</b>	STP-3	<b>\$124.95</b>	CTP-3	<b>\$142.95</b>	MTP-3	<b>\$189.95</b>
4 Roll	20"	TP-4	<b>\$99.95</b>	STP-4	<b>\$137.95</b>	CTP-4	<b>\$157.95</b>	MTP-4	<b>\$209.95</b>

**Locks and clips sold separately.**

	STOCK #	PRICE
Durable Locks (keyed alike)	TP464-LOCK	<b>\$ 19.95</b>
TP-Clip	TP-CLIP	<b>\$ 4.95</b>
Replacement One-Roll Tube	TP1TUBE	<b>\$ 19.95</b>
Replacement Two-Roll Tube	TP2TUBE	<b>\$ 21.95</b>
Replacement Three-Roll Tube	TP3TUBE	<b>\$ 23.95</b>
Replacement Four-Roll Tube	TP4TUBE	<b>\$ 25.95</b>



**Jumbo Roll Dispenser**

Hinged type 304, 20 gauge stainless steel locking dispenser with see-through indicator for ease of use and refill.

10 1/2" dia. 4 1/2" deep large roll dispenser  
#JR10 (NOT SHOWN) . . . . . **\$49.95**  
14" dia. 4 1/2" deep large roll dispenser  
#JR14 . . . . . **\$64.95**



\* Durable, sturdy, 18-20 gauge, type 304 stainless steel frame.  
20 gauge, 1 1/8" diameter stainless steel tube.  
Anti-theft design. 10 year guarantee against breakage.  
Easy to keep clean.

**All prices FOB Grand Rapids, Michigan.**

**ROYCE ROLLS RINGER COMPANY** Grand Rapids, Michigan

Since 1925 ALL STAINLESS STEEL PRODUCTS GUARANTEED 10 YEARS

TOLL FREE 1-800-253-9638 FAX 616-361-5976 [www.RoyceRolls.net](http://www.RoyceRolls.net)

Manufactured, Assembled, Prepared, Sold, and Shipped from Grand Rapids, MI

MANUFACTURED



IN THE U.S.A





## Waste Bins

	SIZE	STOCK#	PRICE
Sanitary napkin receptacle	7 1/2" x 4" x 10"	SNR	\$ 99.95
Small Waste Bin	16" x 8" x 24"	S-BIN	\$186.95
Large Waste Bin	16" x 8" x 32"	L-BIN	\$235.95
Diaper bin with lid	16" x 8" x 24"	DBIN	\$221.95
Medicine cabinet	10 1/2" x 4" x 13 1/2"	MED1	\$180.95

Durable type 304, heavy duty stainless steel rectangular receptacles made for waste or recycle.



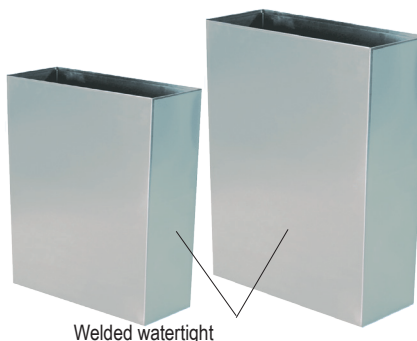
Holes in bottom corners for suction release

## Stainless Steel Rectangular Receptacles

### Receptacles

	SIZE	STOCK#	PRICE
Large Receptacle	20" x 10" x 32"	RG201032	\$384.00
Small Receptacle	16" x 8" x 24"	RG16824	\$229.00

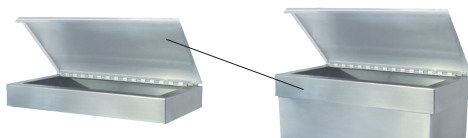
All prices FOB Grand Rapids, MI.



Welded watertight

Durable type 304, 18 gauge stainless steel rectangular receptacles made watertight for waste or recycle.

**Covered Liner Frame** (sold separately)  
Covers trash, while holding liners in place.  
(Price ranges from \$64.95-\$75.95)  
Visit [www.RoyceRolls.net](http://www.RoyceRolls.net) for more information

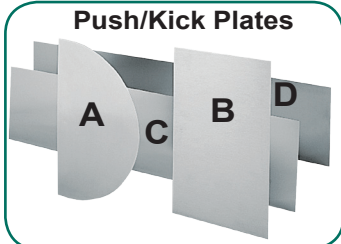
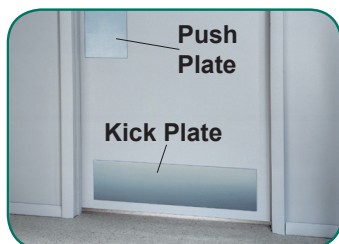


**Liner Frame** (sold separately)  
Liner frames for receptacles hold and conceal liners/bags in place.  
(Price ranges from \$51.95-\$62.95)  
Visit [www.RoyceRolls.net](http://www.RoyceRolls.net) for more information



## Stainless Steel Panels

Stainless Steel wall trim is attractive and will hold up longer than other wall coverings. Our stainless steel panels, corner guards, and door plates install in minutes to any surface.



### Wall Trim

DESCRIPTION	SIZE	STOCK#	PRICE
Corner Guard	3" x 3" x 36"	#1 GUARD	\$44.95
	3" x 3" x 48"	#2 GUARD	\$58.95
	2" x 2" x 36"	#3 GUARD	\$38.95
	2" x 2" x 48"	#4 GUARD	\$51.95
Wall Panels	12" x 12"	1212	\$28.95
	18" x 18"	1818	\$43.95
	24" x 24"	2424	\$57.95

### Door Plates

DESCRIPTION	SIZE	STOCK#	PRICE
A. Half Circle Door Push Plate	13 3/4" x 7"	CPP	\$33.95
B. Rectangular Door Push Plate	14 1/8" x 8"	RPP	\$33.95
C. Door Kick Plate	28" x 6"	KP-28	\$46.95
D. Door Kick Plate	32" x 6"	KP-32	\$57.95

More Push/Kick Plate sizes available at [www.RoyceRolls.net](http://www.RoyceRolls.net)

### Wall Panels



### Corner guards



**ROYCE ROLLS RINGER COMPANY** Grand Rapids, Michigan

Since 1925 ALL STAINLESS STEEL PRODUCTS GUARANTEED 10 YEARS

TOLL FREE 1-800-253-9638 FAX 616-361-5976 [www.RoyceRolls.net](http://www.RoyceRolls.net)

Manufactured, Assembled, Prepared, Sold, and Shipped from Grand Rapids, MI

MANUFACTURED



IN THE U.S.A

# Special Carts for Special Uses!

## Stainless Steel Utility Carry-All

Many uses...including recycle cart, trash hauler, or folding chair storage.

TR-72 Utility Carry-all



Stainless Steel  
Multi-Use Cart  
Available in  
2 Sizes

TR-50 Utility Carry-all



### Utility Carry-All

DESCRIPTION	SIZE	WT CAP.	STOCK#	PRICE
Standard Size	24" x 50"	500 lbs.	TR-50	\$ 950.00
Larger Size	24" x 72"	500 lbs.	TR-72	\$1100.00

**BASE** 50" x 24" (Standard), 72" x 24" (Large)  
stainless steel with a 1/2" bumper lip.

**WHEELS** 5" non-marking polyurethane wheels.

**HANDLE** Heavy gauge stainless steel tubing.



**ROYCE ROLLS RINGER COMPANY** Grand Rapids, Michigan

Since 1925 ALL STAINLESS STEEL PRODUCTS GUARANTEED 10 YEARS

TOLL FREE 1-800-253-9638 FAX 616-361-5976 [www.RoyceRolls.net](http://www.RoyceRolls.net)

Manufactured, Assembled, Prepared, Sold, and Shipped from Grand Rapids, MI

MANUFACTURED



IN THE U.S.A





# Stainless Steel Mopping Units

## #1C HALF OVAL DOUBLE TANK UNIT

**1C Half Oval Double Tank Unit**  
#1C-215-H . . . \$1295.00

#29XH



#7275  
4" caster



(Includes two **HALF OVAL** tanks, wringer, base and handle with #614 basket)

## BUCKET/WRINGER WHEELED COMBO

**428 Bucket/Wringer Wheeled Combo**  
#428 . . . \$755.00

#7022  
3" caster



(Includes one **ROUND** castered bucket with wringer.)

### CART SPECIFICATIONS

**WRINGER** Stainless steel downward pressure wringer.

**TANKS** Two half-oval stainless steel tanks that telescope for compact storage. Domed bottom keeps water cleaner.

**ROUND BUCKETS** Round stainless steel buckets. Domed bottom construction keeps water cleaner.

**CARRIER** Stainless steel with bumpers. 29XH has four 4" non-marking wheels with hair guards and ball bearing casters. CANB has 5" polyurethane non-marking wheels with hair guards and ball bearing casters.

**HANDLE** (CANB & 29XH only) Detachable stainless steel guide handle with 4 tool holders.

**BASKET** 6" x 14" Stainless Steel Utility Basket (Included with 1C Unit)

DESCRIPTION	STOCK#	PRICE
Base with handle, 16-24 oz. wringer, & two 7 1/2-gallon tanks	1C-215-H	\$1295.00
Base and Handle only 29" x 14 1/2"	29XH	\$ 350.00
6" x 14" stainless steel utility basket	614	\$ 79.95
Replacement Wheels 4" caster	7275	\$ 21.95

DESCRIPTION	STOCK#	PRICE
16-24 oz. wringer & one 8-gallon castered round bucket	428	\$755.00
Replacement Wheels 3" caster	7022	\$ 17.95

**29XH PLATFORM DIMENSIONS** 14 1/2" x 29"  
**CANB PLATFORM DIMENSIONS** 23" x 30" plus 1" bumper

**GUARANTEE** 10 year guarantee against breakage.

**OPTIONAL** (CANB carts only)  
Stainless steel lock box.

## CANB DOUBLE TANK CARRY-ALL

**CANB Double Tank Carry-all**  
#CANB-214 . . \$1324.00

#CANB-30



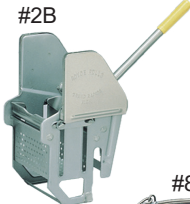
#5TPR  
5" wheel



## BUCKETS AND WRINGER

**Buckets and Wringers**

#2B



#483



#8



#7022  
3" caster



DESCRIPTION	STOCK#	PRICE
Base with handle, 16-24 oz. wringer, & two 7-gallon tanks	CANB-214	\$1324.00
Base and Handle only 23" x 30"	CANB-30	\$ 450.00
Replacement Wheels 5" quiet wheel only	5TPR	\$ 19.95

DESCRIPTION	STOCK#	PRICE
Stainless Steel 16-24 oz. wringer	2B	\$375.00
Stainless Steel 8-gallon round bucket	8	\$275.00
Stainless Steel castered 8-gallon round bucket	483	\$380.00
Replacement Wheels 3" caster	7022	\$ 17.95

## CART OPTIONS



Stainless Steel Lock Box for CANB cart 14" x 11" x 12"  
#LB-75 . . . \$199.95



Replacement plastic handle grip. Stock #HG . . . \$4.95



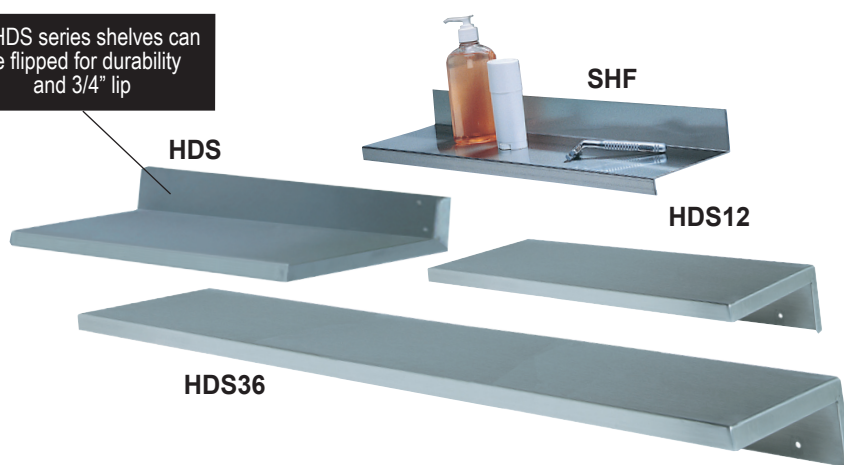
Replacement springs for wringers  
12-16 oz. #SM2" . . . \$12.95  
Larger sizes #LG3" . . . \$12.95  
S-Hook only #S-HOOK . . \$ 4.95

24" Wet Floor Sign  
#CWF27 . . . \$23.95



## Stainless Steel Shelves

All HDS series shelves can be flipped for durability and 3/4" lip



### Wall Mounted Shelves

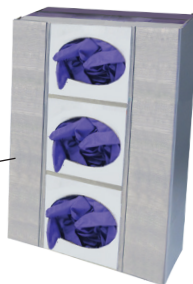
	SIZE	STOCK#	PRICE
Lite Design Shelf	18" x 5"	SHF	\$ 59.95
Heavy Duty Shelf	18" x 8"	HDS	\$ 89.95
36" Wide Heavy Duty Shelf	36" x 8"	HDS36	\$121.95
12" Deep Heavy Duty Shelf	18" x 12"	HDS12	\$106.95
Deep/wide Heavy Duty Shelf (HDS DW NOT SHOWN)	36" x 12"	HDSDW	\$179.95

## Wall Mounted Glove Box Holders

Made of heavy-duty, 18 gauge stainless steel  
Mounts either horizontally or vertically  
Custom sizes available by request



\*Holds Small, Medium, and Large gloves



### Holds 1 box

DESCRIPTION	DIMENSIONS	STOCK#	PRICE
Single Glove Box Holder	9 5/8" x 3" x 5"	GBH1	\$39.95
Double Glove Box Holder	9 5/8" x 3" x 10"	GBH2	\$59.95
Triple Glove Box Holder	9 5/8" x 3" x 15"	GBH3	\$76.95

### Holds 2 boxes

### Holds 3 boxes

Wide sizes also available at [www.RoyceRolls.net/GloveBoxHolders](http://www.RoyceRolls.net/GloveBoxHolders)

Wall mounted glove box holders for your facility!

## Carry-All Cart

DESCRIPTION	STOCK#	PRICE
Carry-All cart designed for carrying various loads Platform dimension is 23" x 30" plus 1" bumper	CANB-30	\$450.00



(Trash can not included)

Multi-Purpose Transport Cart!

Add hanging Lock Box for extra storage!



Box dimensions  
14" x 11" x 12"  
#LB-75 . . . \$199.95



## More Stainless Steel Solutions

### Cleaning/Storage Cart

DESCRIPTION	STOCK#	PRICE
Stainless Steel Folding Cart	F36	<b>\$1699.00</b>
Our standard size cleaning/storage cart complete with 2 shelves, locking door, zip bag, trash lid, and "snaprack" tool holder.		



### Microfiber Cart System

DESCRIPTION	STOCK#	PRICE
Includes 26" stainless steel base with handle, MST2 tubs with sieve, mesh bag, large pouch, & handle adapter.	26XH-MST2	<b>\$897.00</b>

**(Microfiber handle sold separately online)**

#### Ala' Cart Items and Accessories

26" Base with Handle	26XH	<b>\$325.00</b>
MST2 Double Microfiber Tubs with Sieve	MST2	<b>\$375.00</b>
14" x 24" Antibacterial Pouch	PCH24	<b>\$ 58.95</b>
16" x 30" Mesh Bag	MNET	<b>\$ 37.95</b>
Handle Adapter for Pouch	PCHBAR	<b>\$ 19.95</b>



### Accessories for Royce Rolls Ringer Carts



#### ACCESSORIES

DESCRIPTION	STOCK#	PRICE
1. 36" Angle broom w/ flagged polypropylene bristles.	#ALB	<b>\$23.00</b> ea.
2. Plastic handle with hanger hole and no flip base. Lobby dust pan 39 1/2" x 12" x 11".	#LDP	<b>\$28.50</b> ea.
3. Polypropylene counter duster w/ flagged poly bristle.	#CTD	<b>\$12.50</b> ea.
4. Heavy duty black plastic dustpan.	#PDT	<b>\$ 7.50</b> ea.
5. Wire cleaning brush with stainless steel bristles.	#WTB	<b>\$ 7.75</b> ea.

#### ACCESSORIES

DESCRIPTION	STOCK#	PRICE
6. Durable industrial power plunger.	#PLG1	<b>\$20.00</b> ea.
7. Standard caddy 5 1/2" x 15" x 11".	#SDC	<b>\$20.75</b> ea.
8. Acrylic fiber bowl mop with plastic handle.	#BMOP	<b>\$ 2.75</b> ea.
9. Sanitary caddy for bowl mop. Plastic with hinged top.	#SCMB	<b>\$14.00</b> ea.
10. 36" thermal plastic resin squeeze handled grip stick.	#PIK1	<b>\$36.95</b> ea.
11. 32" aluminum pistol handled grip stick	#PIK3	<b>\$41.95</b> ea.



**ROYCE ROLLS RINGER COMPANY** Grand Rapids, Michigan

Since 1925 ALL STAINLESS STEEL PRODUCTS GUARANTEED 10 YEARS

TOLL FREE 1-800-253-9638 FAX 616-361-5976 [www.RoyceRolls.net](http://www.RoyceRolls.net)

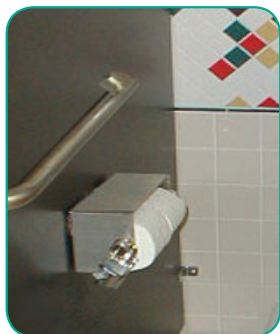
Manufactured, Assembled, Prepared, Sold, and Shipped from Grand Rapids, MI

MANUFACTURED



IN THE U.S.A

## The Indestructible Dispenser\*



All series  
available in  
1,2,3, or 4  
roll sizes

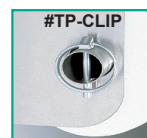


TP Series

You can't do without our tough-built stainless steel TP-Dispensers. They're hard to scratch or dent, and pilfer-proof when teamed with a sturdy durable lock. If value, not vandalism, is a concern, try the handy TP-Clip.

Our TP-Dispenser frames are made of heavy duty, rust-proof, type 304 stainless steel, with no moving parts, so you are assured of many years of service with little or no maintenance. They're easy to install, clean and refill, and you have a choice of our 1,2,3, or 4 roll model!

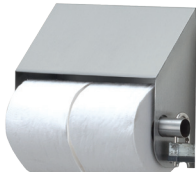
Choose Master Locks® (keyed alike)  
or TP-Clip (each sold separately)



TP Series



STP Series



CTP Series



MTP Series



ROLLS	SIZE	Standard Dispenser	PRICE	Slanted Dispenser	PRICE	Covered Dispenser	PRICE	Slanted and Covered Dispenser	PRICE
1 Roll	5 1/8"	TP-1	<b>\$59.95</b>	STP-1	<b>\$ 99.95</b>	CTP-1	<b>\$112.95</b>	MTP-1	<b>\$149.95</b>
2 Roll	10 1/4"	TP-2	<b>\$73.95</b>	STP-2	<b>\$112.95</b>	CTP-2	<b>\$127.95</b>	MTP-2	<b>\$169.95</b>
3 Roll	15 1/2"	TP-3	<b>\$85.95</b>	STP-3	<b>\$124.95</b>	CTP-3	<b>\$142.95</b>	MTP-3	<b>\$189.95</b>
4 Roll	20"	TP-4	<b>\$99.95</b>	STP-4	<b>\$137.95</b>	CTP-4	<b>\$157.95</b>	MTP-4	<b>\$209.95</b>

### Locks and clips sold separately.

Durable Locks (keyed alike)  
TP-Clip  
Replacement One-Roll Tube  
Replacement Two-Roll Tube  
Replacement Three-Roll Tube  
Replacement Four-Roll Tube

STOCK #	PRICE
TP464-LOCK	<b>\$ 19.95</b>
TP-CLIP	<b>\$ 4.95</b>
TP1TUBE	<b>\$ 19.95</b>
TP2TUBE	<b>\$ 21.95</b>
TP3TUBE	<b>\$ 23.95</b>
TP4TUBE	<b>\$ 25.95</b>

#JR14



### Jumbo Roll Dispenser

Hinged type 304, 20 gauge stainless steel locking dispenser with see-through indicator for ease of use and refill.

10 1/2" dia. 4 1/2" deep large roll dispenser  
#JR10 (NOT SHOWN) . . . . . **\$49.95**  
14" dia. 4 1/2" deep large roll dispenser  
#JR14 . . . . . **\$64.95**

Durable, sturdy, 18-20 gauge, type 304 stainless steel frame.  
20 gauge, 1 1/8" diameter stainless steel tube.  
Anti-theft design. 10 year guarantee against breakage.  
Easy to keep clean.



#RESTRICTOR

All prices FOB Grand Rapids, Michigan.



MANUFACTURED



IN THE USA  
Since 1925

Contact Us  
Call Toll Free 800-253-9638  
[www.RoyceRolls.net](http://www.RoyceRolls.net)

