

Instructions for ...

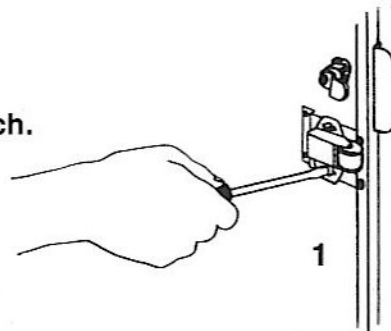
1. Changing Old Style Doors to Autolock Style
2. Flange Installation

INSTALLED EASILY WITH BASIC TOOLS.

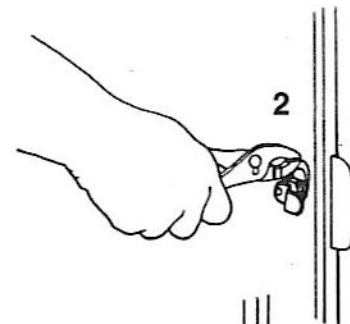
YOU WILL NEED:

- Pair of pliers.
- $\frac{7}{8}$ " open ended wrench or an adjustable wrench.
- Screwdriver

1. Remove roller catch with a screwdriver.

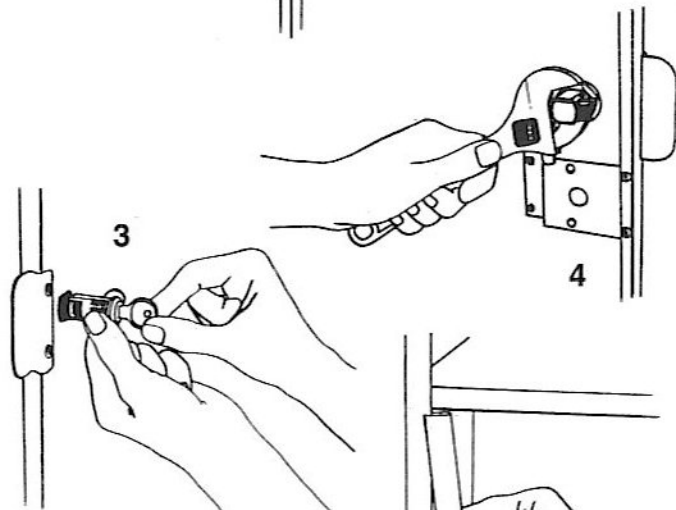


2. Pull metal clip off back of original lock with pliers. Remove lock.



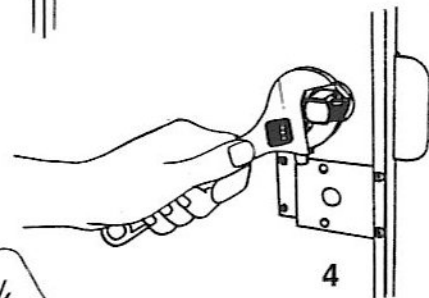
Remove nut and washer from new lock. (It is necessary to turn key to retract black plastic latch for removal of nut and washer.)

3. With black plastic latch pointed to your left, grasp lock by the barrel. Turn key to retract latch then push barrel through existing lock hole.

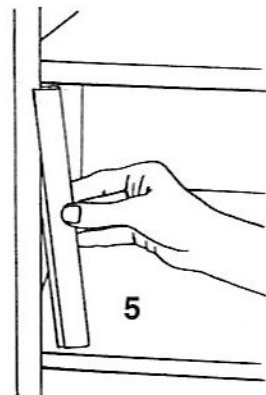


With key still turned, put washer on back of lock, then $\frac{7}{8}$ " nut and tighten by hand.

4. Tighten nut rest of way with wrench.



5. Clip latch plate on to flange between 2 shelves making sure that the double thickness side of the latch plate is facing away from you. Your Royce Rolls Ringer Auto-Lock is ready to use.



Close door firmly to lock. Turn key $\frac{1}{4}$ turn in either direction to unlock and open.